

MS4s and Floodplain Management Good Connections

August 24, 2017



Management

Floodplain Management is a decision-making process that aims to achieve the wise use of the nation's floodplains. (FEMA)

“Wise use” means both reduced flood losses and protection of the natural resources and function of floodplains. (FEMA)

Stormwater Management protects water quality and satisfies the appropriate water quality requirements of the Clean Water Act (TDEC/EPA/CFR)

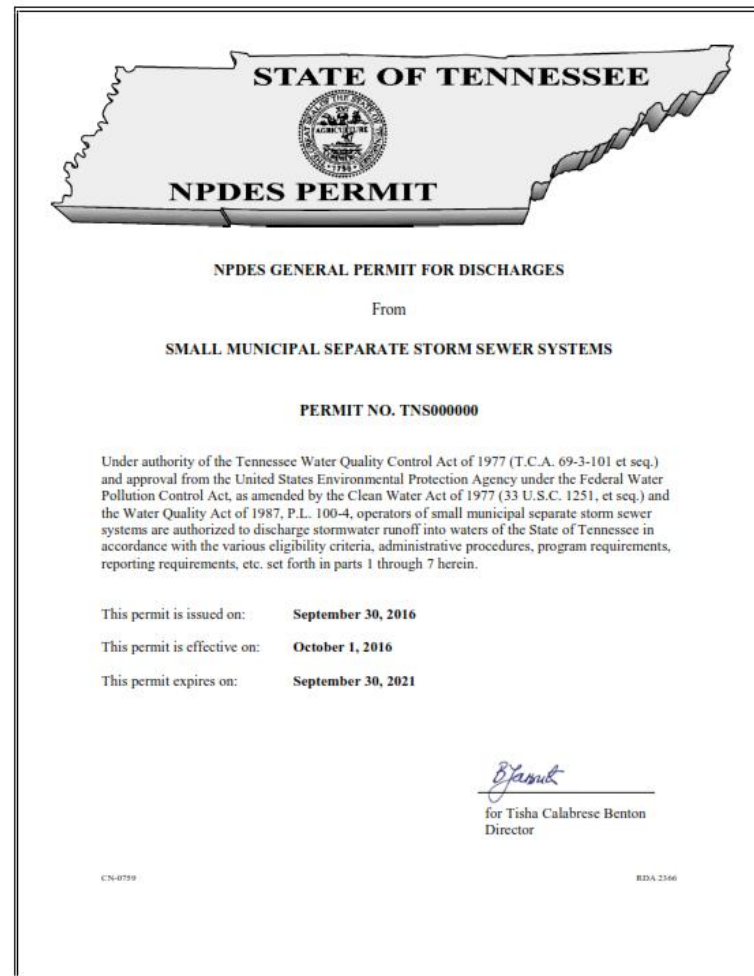


MS4 Permit

Municipal Separate Storm Sewer System (MS4)

Network of conveyances owned by a community that collect and convey stormwater

Six Minimum Control Measures (MCMs)



STATE OF TENNESSEE

NPDES PERMIT

NPDES GENERAL PERMIT FOR DISCHARGES

From

SMALL MUNICIPAL SEPARATE STORM SEWER SYSTEMS


PERMIT NO. TNS000000

Under authority of the Tennessee Water Quality Control Act of 1977 (T.C.A. 69-3-101 et seq.) and approval from the United States Environmental Protection Agency under the Federal Water Pollution Control Act, as amended by the Clean Water Act of 1977 (33 U.S.C. 1251, et seq.) and the Water Quality Act of 1987, P.L. 100-4, operators of small municipal separate storm sewer systems are authorized to discharge stormwater runoff into waters of the State of Tennessee in accordance with the various eligibility criteria, administrative procedures, program requirements, reporting requirements, etc. set forth in parts 1 through 7 herein.

This permit is issued on: **September 30, 2016**

This permit is effective on: **October 1, 2016**

This permit expires on: **September 30, 2021**


for Tisha Calabrese Benton
Director

CN-0759 BDA 2366

MCM 1 & 2

Public Education and Outreach & Public Involvement/Participation



Public awareness

Residential

Water quality impacts from household activities

Flooding impacts from household activities

Development Community

Ordinances, regulations, and guidance materials

Long-term impacts

Websites

> Filter By Posting Date Range (Optional)

Search Clear All Fields

Search Results for SUMNER COUNTY ALL JURISDICTIONS

[Click subscribe](#) to receive email notifications when products are updated.

Please Note: Searching All Products by county displays all products for all communities within the county. You can refine your search results by specifying your specific jurisdiction location using the drop-down menus above.

- Effective Products (168)
 - FIRM Panels (96)
 - FIS Reports (7)
 - LOMC (61)
 - NPHL Data-State (1)
 - NPHL Data-County (3)
- Preliminary Products (0)
- Pending Product (0)
- Historic Products (380)
- Flood Risk Products (0)

Product ID	Latest Study Effective Date	Latest LOMR Effective Date	Size	Download
NFHL_47037C	04/05/2017	N/A	198MB	Download
NFHL_47147C	04/16/2008	N/A	15MB	Download
NFHL_47165C	04/17/2012	07/18/2013	18MB	Download

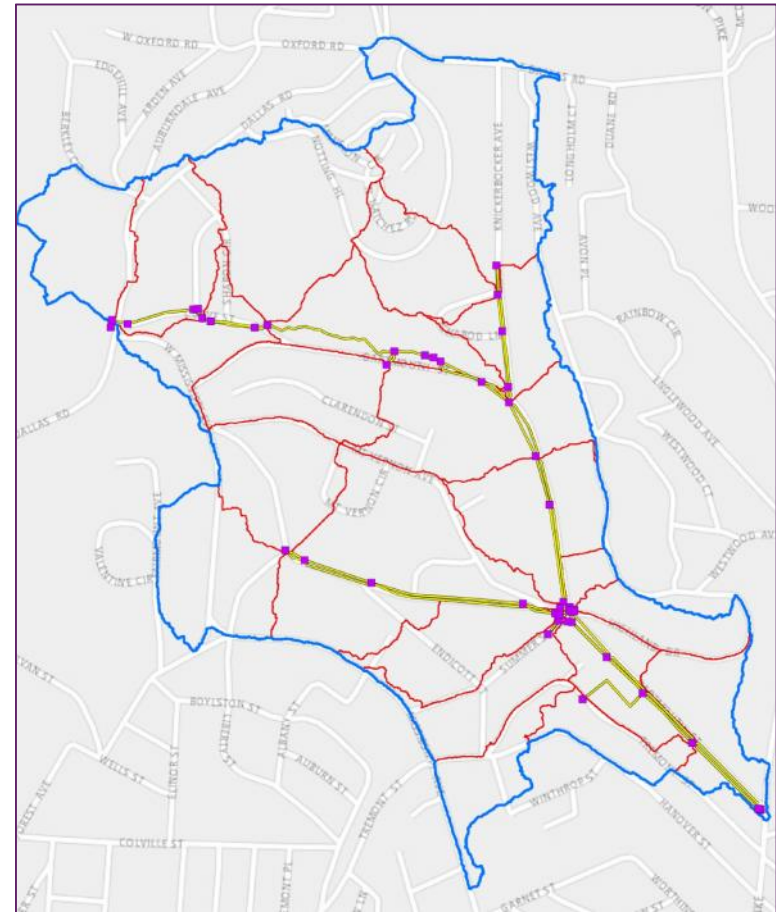


MCM 3

Illicit Discharge Detection and Elimination (IDDE)



GIS-based storm sewer system map



MCM 4

Construction Site Stormwater Runoff Pollution Control



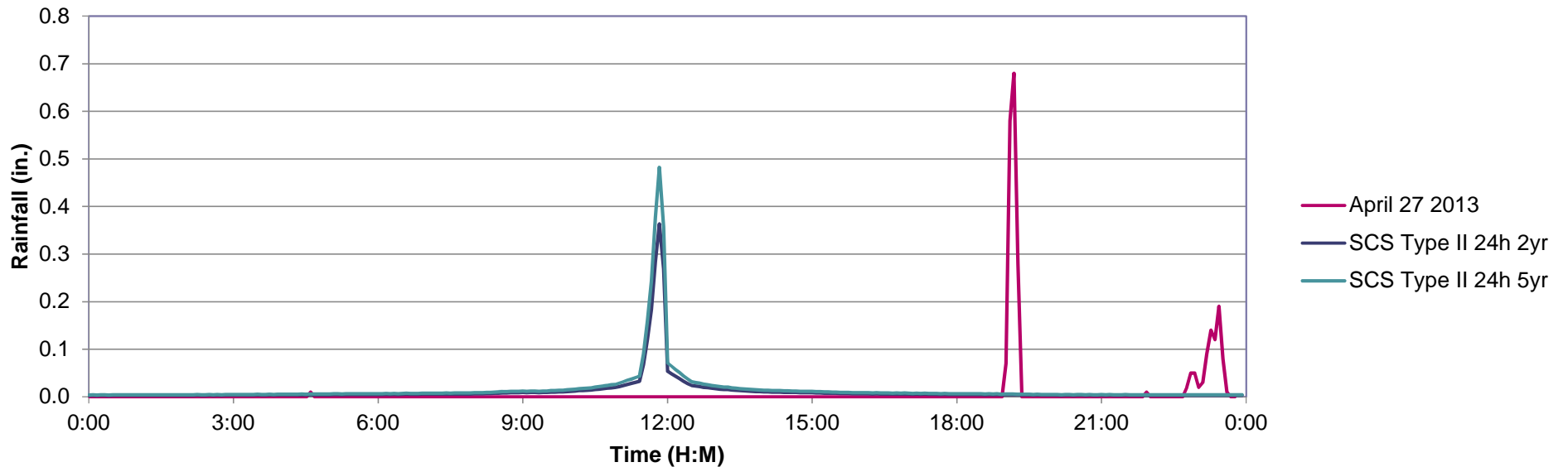
Design Storm requirements

Plans review process

Spillway location

Ordinance changes

Inspections and Meetings

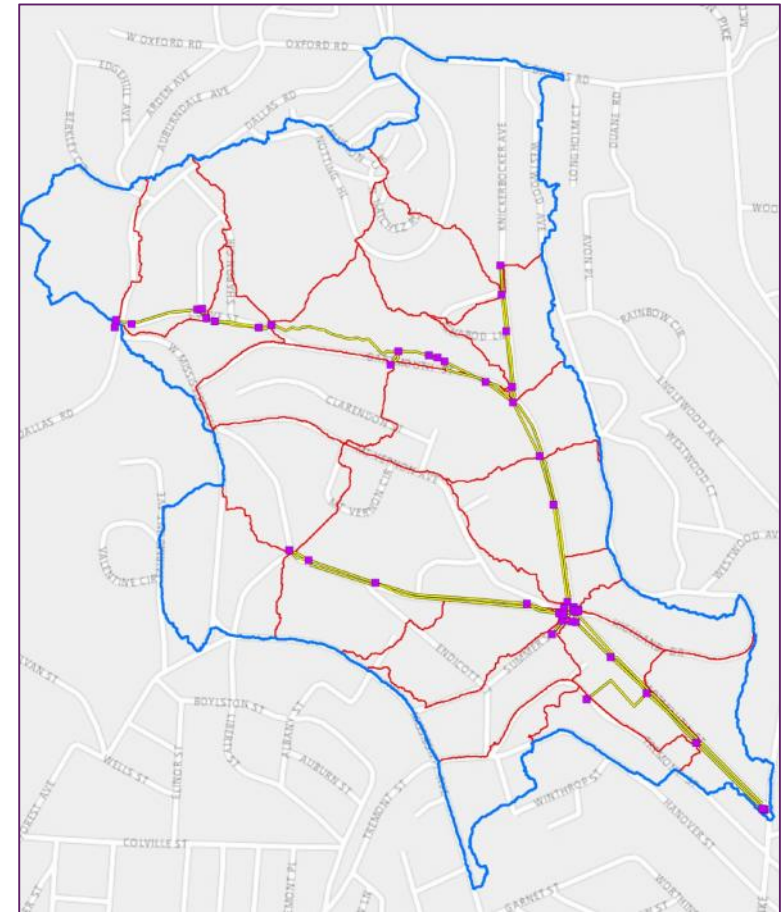


MCM 5

Permanent Stormwater Management at New Development and Redevelopment Projects



Runoff Capture
Maintenance
Riparian Buffers



MCM 6

Pollution Prevention/Good Housekeeping for Municipal Operations



Operations and Maintenance Plans Maintenance





amec
foster
wheeler

FEMA Regulatory Products – Wise Use

- Flood Insurance Study (FIS)
- FIRM Panels (Maps)
- FIRM Database (GIS)



FLOOD INSURANCE STUDY
FEDERAL EMERGENCY MANAGEMENT AGENCY

VOLUME 1 OF 2

MORGAN COUNTY, ALABAMA AND INCORPORATED AREAS

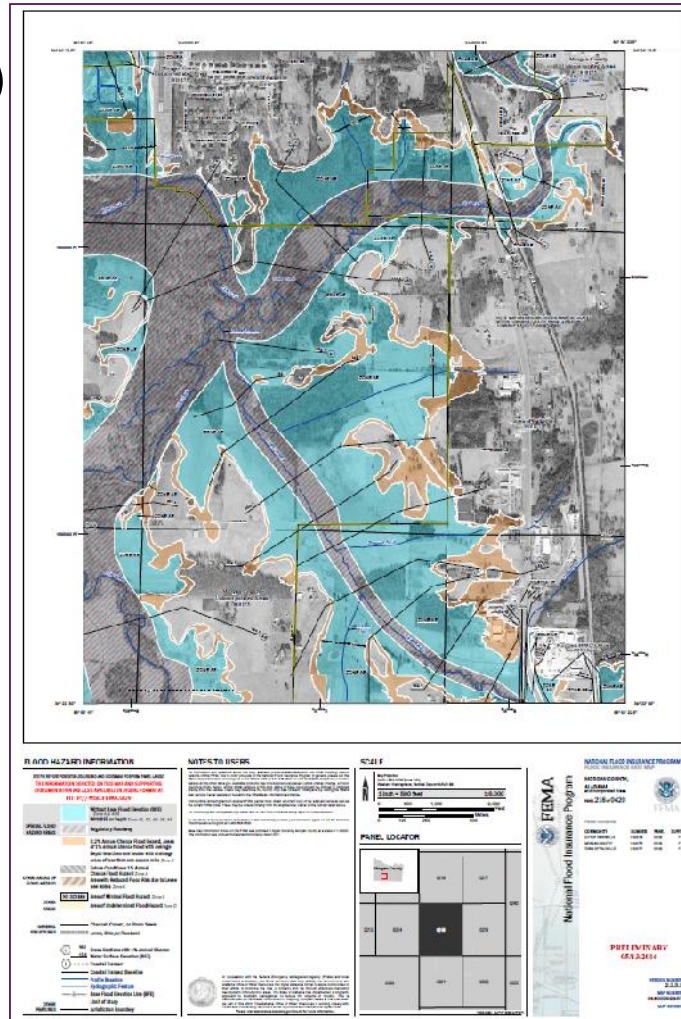
COMMUNITY NAME	COMMUNITY NUMBER
CITY OF DECATUR	010176
TOWN OF EVA*	010125
TOWN OF FALKVILLE	010177
CITY OF HARTSHOFF	010178
MORGAN COUNTY UNINCORPORATED AREAS	010179*
TOWN OF PRICEVILLE	010448
TOWN OF SOMERVELL	010309
TOWN OF TRINITY	125460

*Not a Flood-Prone Community

PRELIMINARY:
MAY 13, 2016

FLOOD INSURANCE STUDY NUMBER
01103C-V0131H
Worksheet Number: 7.3.3.7



- 01103C_PRELIM_metadata.xml
- L_Comm_Info.dbf
- L_Comm_Revis.dbf
- L_ManningsN.dbf
- L_Meetings.cbt
- L_MT2_LOMR.dbf
- L_Mtg_PCC.cbf
- L_Pan_Revis.dbf
- L_Sourcc_Cit.dbf
- L_Summary_Discharges.dbf
- L_XS_Elev.dbf
- S_Base_Index.shp
- S_BFC.shp
- S_FIRM_Pan.shp
- S_Fld_Haz_Ar.shp
- S_Fld_Haz_Ln.shp
- S_Gage.shp
- S_Gen_Struct.shp
- S_Hydro_Reach.shp
- S_Label_Ld.shp
- S_Label_PI.shp
- S_Nodes.shp
- S_PLSS_Ar.shp
- S_Pol_Ar.shp
- S_Profil_Basin.shp
- S_Stn_Start.shp
- S_Subbasins.shp
- S_Submital_In.shp
- S_Tmsport_Ln.shp
- S_Wtr_Ln.shp
- S_XS.shp
- Study_Info.dbf

Mitigation Opportunities





Questions & Comments

Patrick Dobbs, PE

Senior Water Resources Engineer, Amec Foster Wheeler

Patrick.Dobbs@amecfw.com

615-333-0630